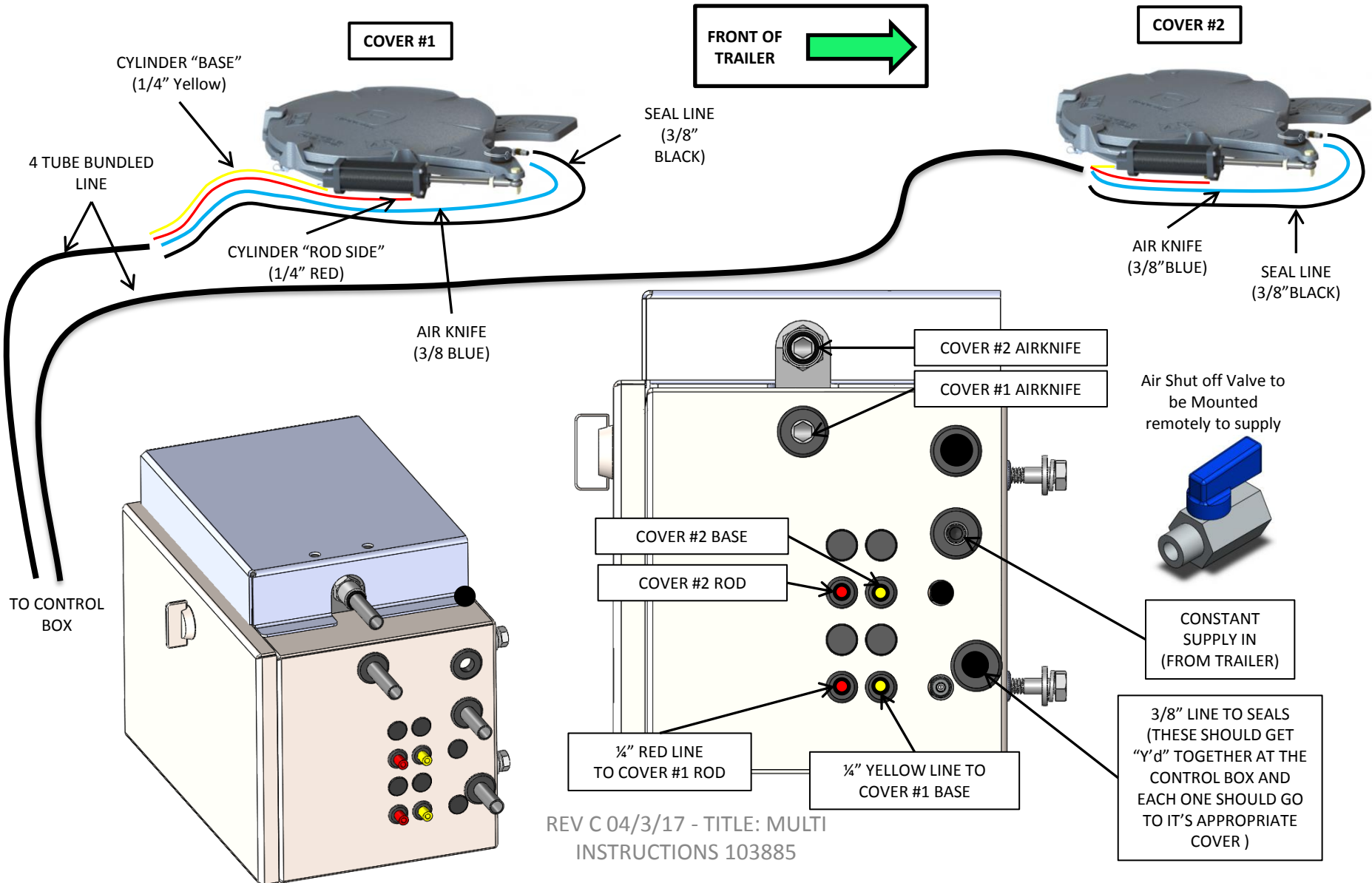
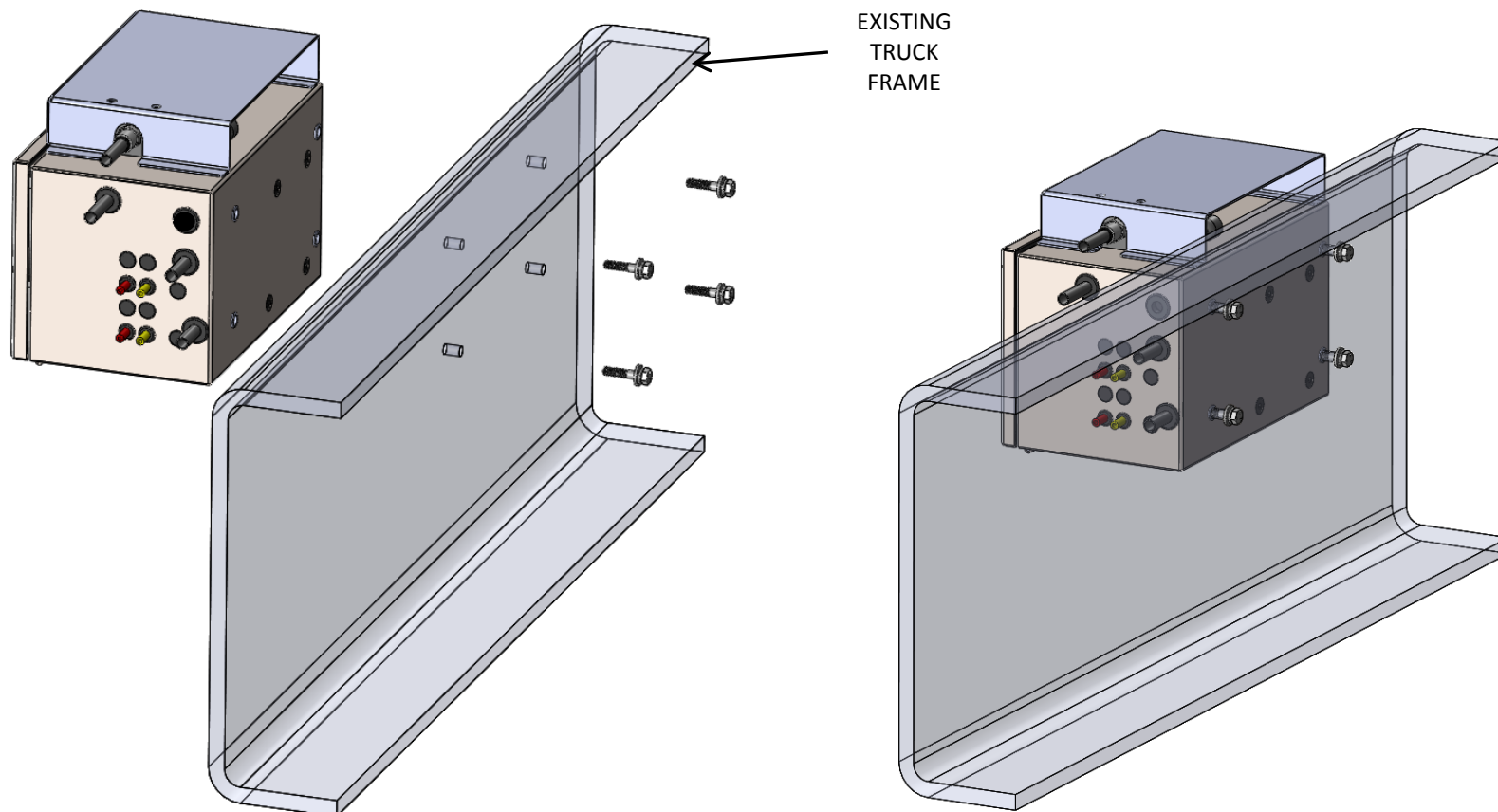


# AIRLINE SCHEMATIC - 103885 (2 COVER INSTALL W/AIR KNIFE)



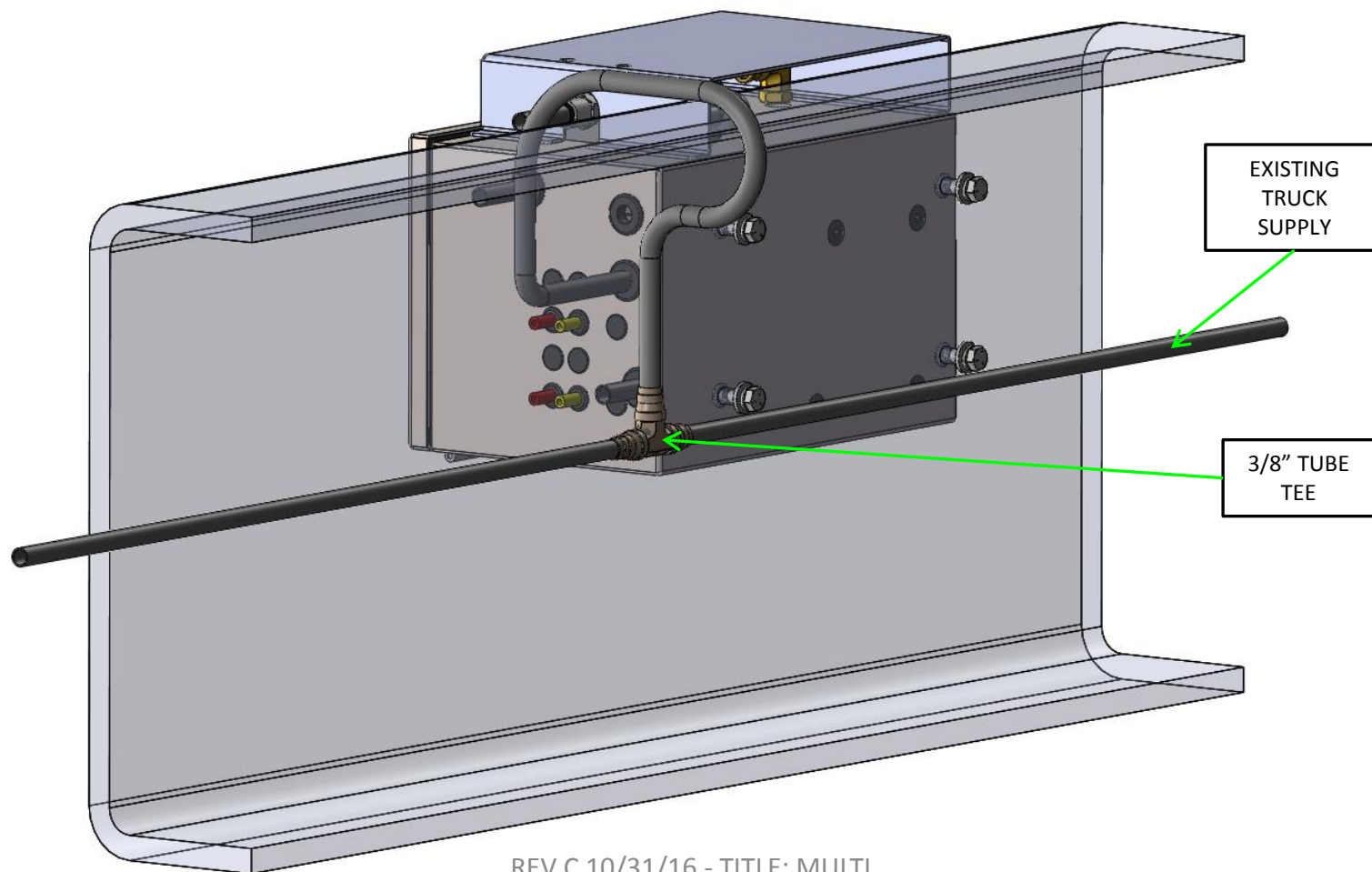
## CONTROL BOX MOUNTING (2 COVER INSTALL W/AIR KNIFE)

1. Thru drill truck frame rail using provided template
2. Attach as shown and tighten bolts (1/4"-20 x 1-1/4")



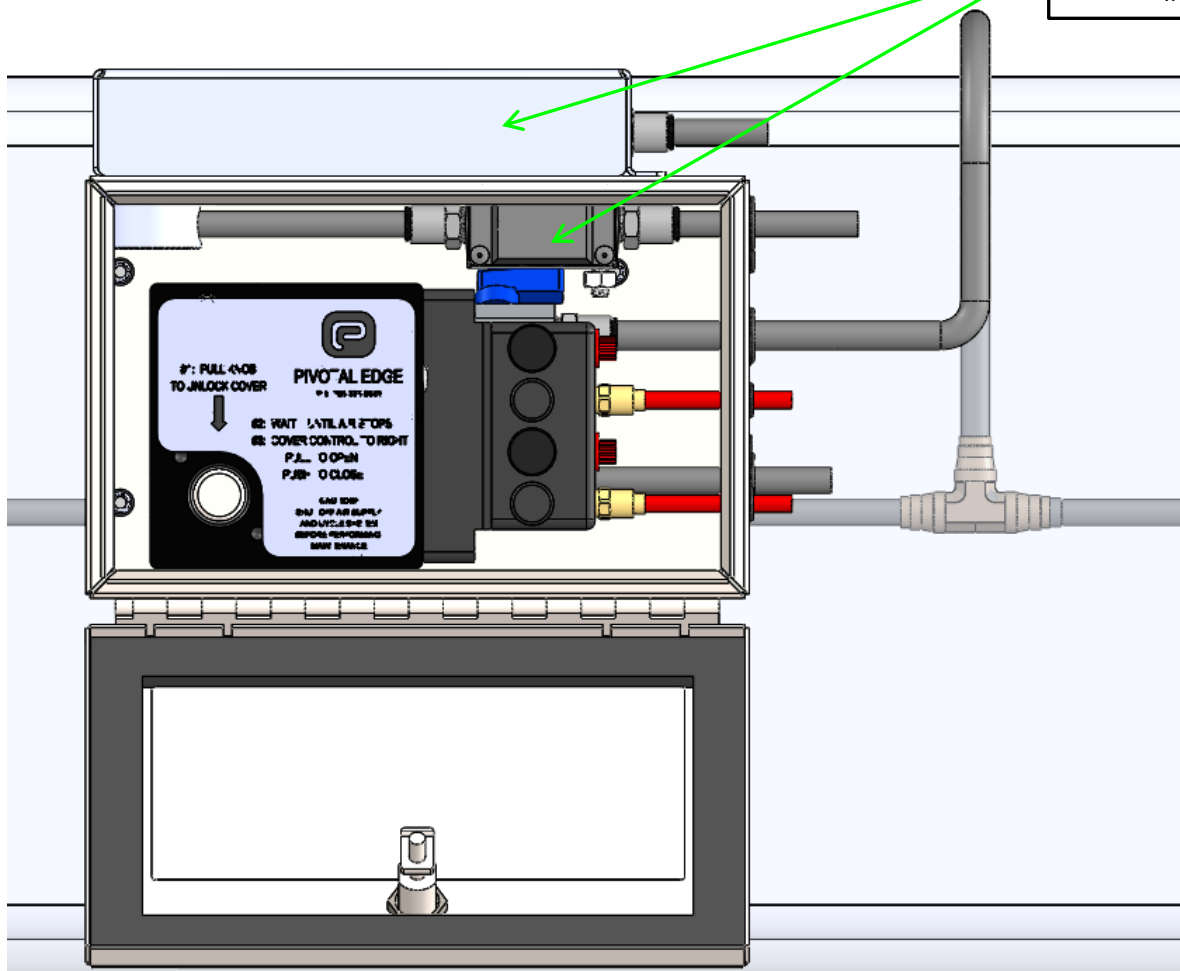
## CONTROL BOX PLUMBING (2 COVER INSTALL W/AIR KNIFE)

1. "T" into truck supply as shown
2. Plumb as shown from front to back with supplied Y's, T, and 3/8" tubeline.



## CONTROL BOX PLUMBING (2 COVER INSTALL W/AIR KNIFE)

AIRKNIFE LOCATED IN BOX AND  
COVER ON MULTIPLE COVER  
INSTALLATIONS



## TOP SIDE CONNECTIONS (2 COVER INSTALL W/AIR KNIFE)

